

Symmetry, Reflection and Rotation

Q1. Which letter(s) in the word **SHAPE** have no line of symmetry?

Answer: _____

Q2. Draw the line of symmetry in each of the following letters (if any):

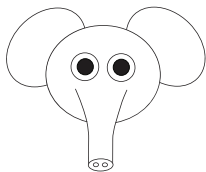


Q3. State True or False:

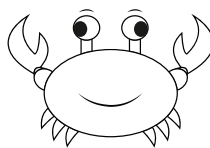
- a. The letter J has no line of symmetry. _____
- b. All letters of English alphabet have at least one line of symmetry. _____
- c. A circle has no line of symmetry. _____
- d. A semi-circle has only one line of symmetry. _____

Q4. Draw the line of symmetry for the following figures:

a.



b.



Q5. Name the triangles having the following lines of symmetry:

- a. 0 : _____
- b. 1 : _____
- c. 3 : _____

Q6. Find whether the following are lines of symmetry of the shapes in the question or not:

- a. Angle bisector of an angle: _____
- b. Diameter of a circle: _____
- c. Shorter diagonal of a kite: _____
- d. Perpendicular bisector of a line segment: _____

Q7. Find the coordinates of the following points when reflected in the X-axis, Y-axis and origin and fill in the table below:

Co-ordinates of the point	Co-ordinates when reflected in the X-axis	Co-ordinates when reflected in the Y-axis	Co-ordinates when reflected in the origin
(1, 7)			
(6, -5)			
(-3, 8)			
(-2, -7)			

Q8. Draw a $\triangle ABC$ with vertices A (3, 4), B (6, 4) and C (5, 2). Reflect the triangle in the X-axis to form $\triangle A'B'C'$. Write the coordinates of A', B' and C'.

- Co-ordinates of A' : _____
- Co-ordinates of B' : _____
- Co-ordinates of C' : _____

Q9. Draw the images of the following figure when rotated about the point A.



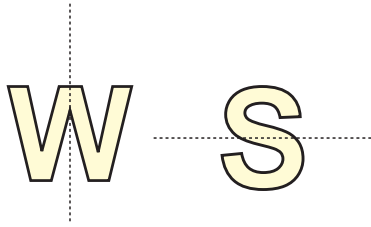
- a. 180° clockwise
- b. 90° clockwise

Q10. Draw two points P (1, 1) and Q (3, 2). Join PQ. Rotate PQ (clockwise) about the origin through 180° to the position P'Q'. Find the coordinates of P' and Q' and state True or False for the following statements:

- a. PQ is shorter than P'Q'. _____
- b. P and P' have same co-ordinates. _____
- c. Co-ordinates of Q' are $(-3, -2)$. _____
- d. The co-ordinates of P' would be $(-1, 1)$ if PQ was rotated clockwise about the origin through 270° . _____

Answers

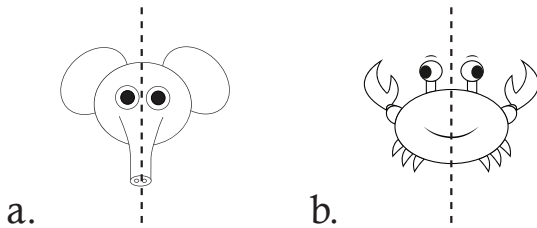
1. P



2.

3. a. True; b. False; c. False; d. True

4.

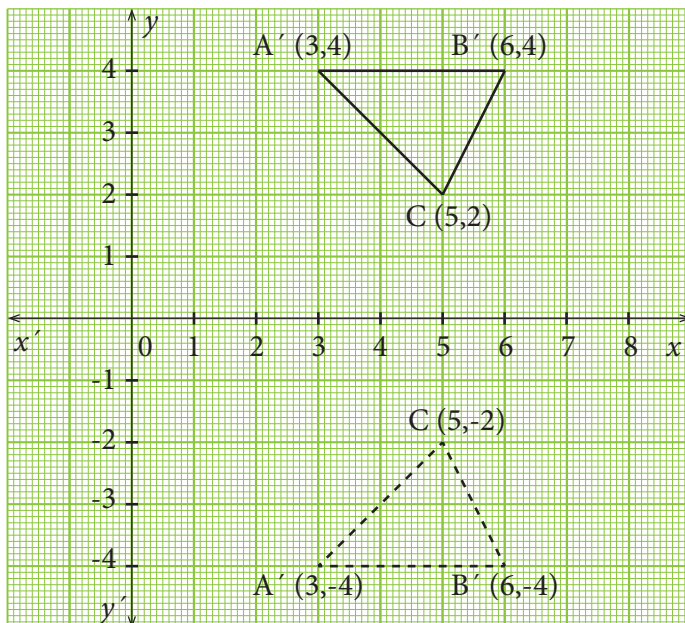


5. a. scalene triangle; b. isosceles triangle; c. equilateral triangle

6. a. Yes; b. No; c. No; d. yes

7.

Co-ordinates of the point	Co-ordinates when reflected in the X-axis	Co-ordinates when reflected in the Y-axis	Co-ordinates when reflected in the origin
(1, 7)	(1, -7)	(-1, 7)	(-1, -7)
(6, -5)	(6, 5)	(-6, -5)	(-6, 5)
(-3, 8)	(-3, -8)	(3, 8)	(3, -8)
(-2, -7)	(-2, 7)	(2, -7)	(2, 7)

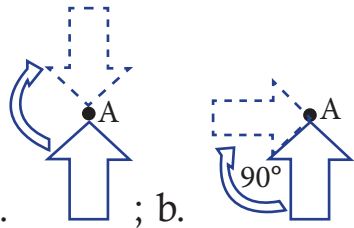


8.

Co-ordinates of A': (3, -4)

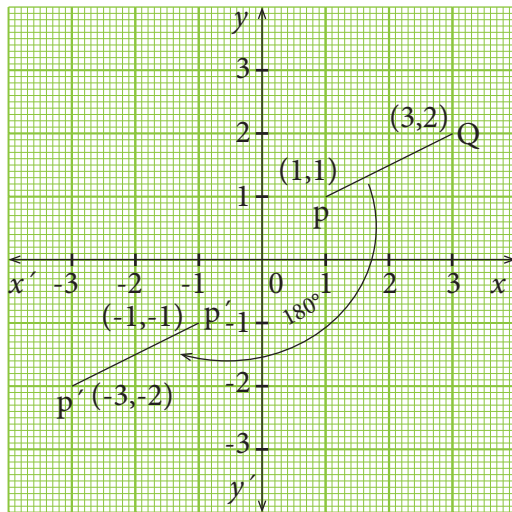
Co-ordinates of B': (6, -4)

Co-ordinates of C': (5, -2)



9. a. ; b.

10.



a. False; b. False; c. True; d. True